



CHELSEA  
CASTLE

150 W 22<sup>ND</sup> ST.



ENTIRE  
11<sup>TH</sup> FLOOR

6900SF

HIGH END  
PRE-BUILD

NEARBY TRAINS



[WWW.I50W22.COM](http://WWW.I50W22.COM)

**M. Rapaport**  
CO., INC. EST. 1904

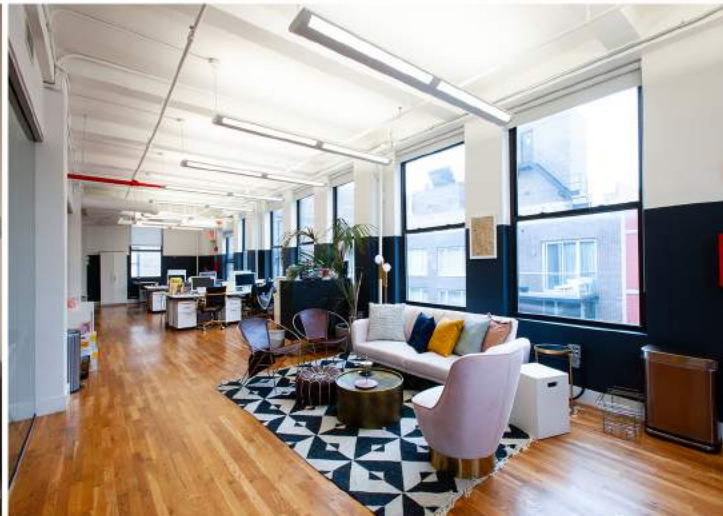
**JAY D. A. FULLER**  
President | Licensed Real Estate Broker  
18 East 48<sup>th</sup> Street/6<sup>th</sup> Fl/New York, NY 10017  
P: 212.355.7915  
jd@mrpaport.com [mrpaport.com](http://mrpaport.com)

 **REDWOOD**  
PROPERTY GROUP

Licensed Real Estate Broker

**ELI SOMECK**

225 West 35<sup>th</sup> Street | 12<sup>th</sup> Fl | New York, NY 10001  
P: 646.214.0334 C: 917.335.4948  
E: [eli.someck@redwoodnyc.com](mailto:eli.someck@redwoodnyc.com) [redwoodnyc.com](http://redwoodnyc.com)



# 150 W 22<sup>ND</sup> ST. 11<sup>TH</sup> FLOOR

## *Space Features:*

- Highly coveted, fully built full floor with above-standard finishes
- Excellent natural light from windows on four sides
- All-glass finishes including: four (4) conference rooms, two (2) offices, four (4) 3-person meeting rooms/call rooms
- Hardwood floors and 11' exposed ceilings
- Built in reception with creative light fixture, open area currently seats 52, lounge area, three (3) private bathrooms
- Pantry with dishwasher, microwave and stainless steel Samsung refrigerator
- 24/7 energy-efficient, tenant-controlled AC with temperature controls for each room



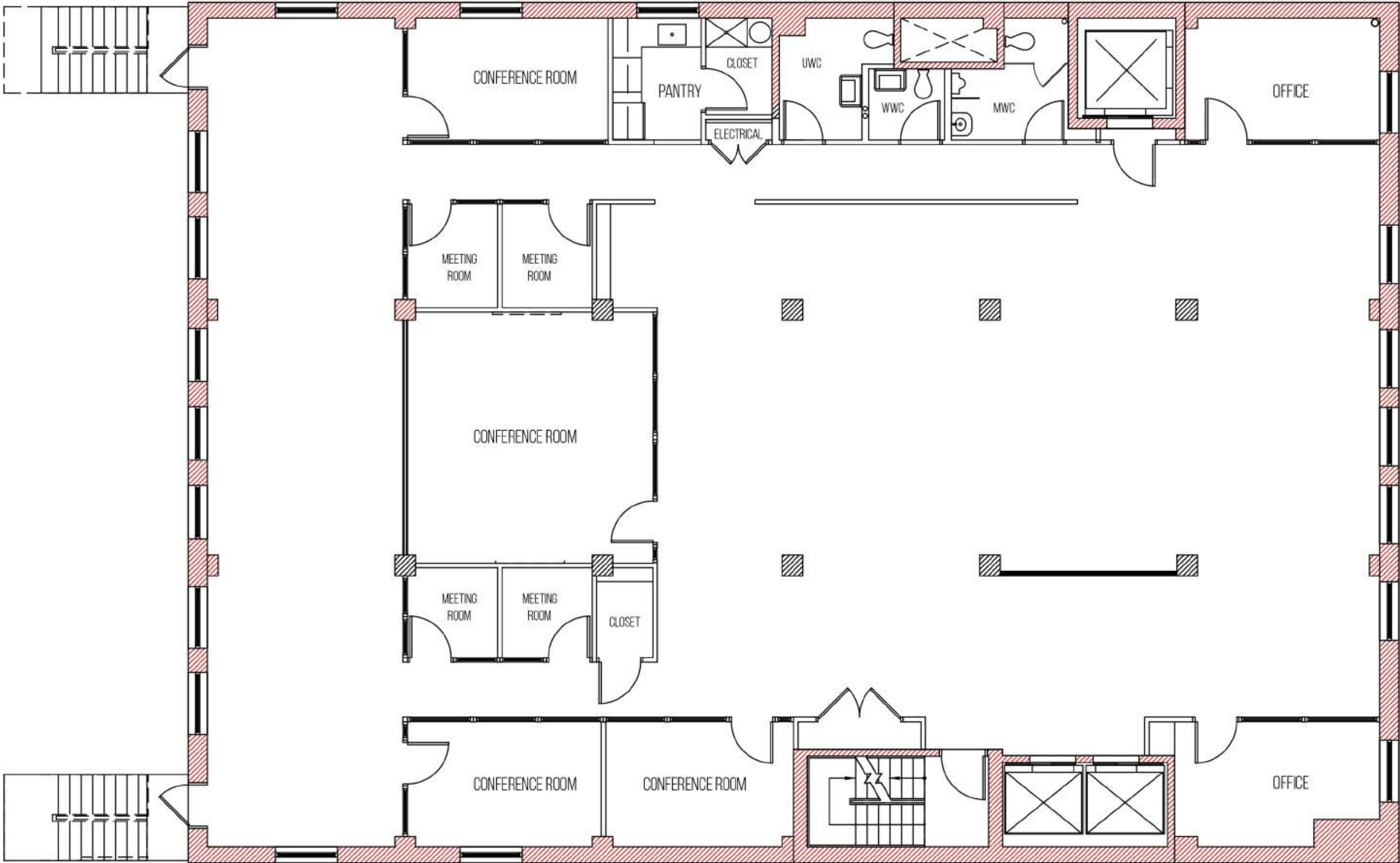
# 150 W 22<sup>ND</sup> ST. 11<sup>TH</sup> FLOOR

## *About the Building*

- Owner-managed, fully leased property
- Brand new automatic service elevator
- Highly renowned Yoga studio on 2nd Fl.

### *• Building is wired for:*

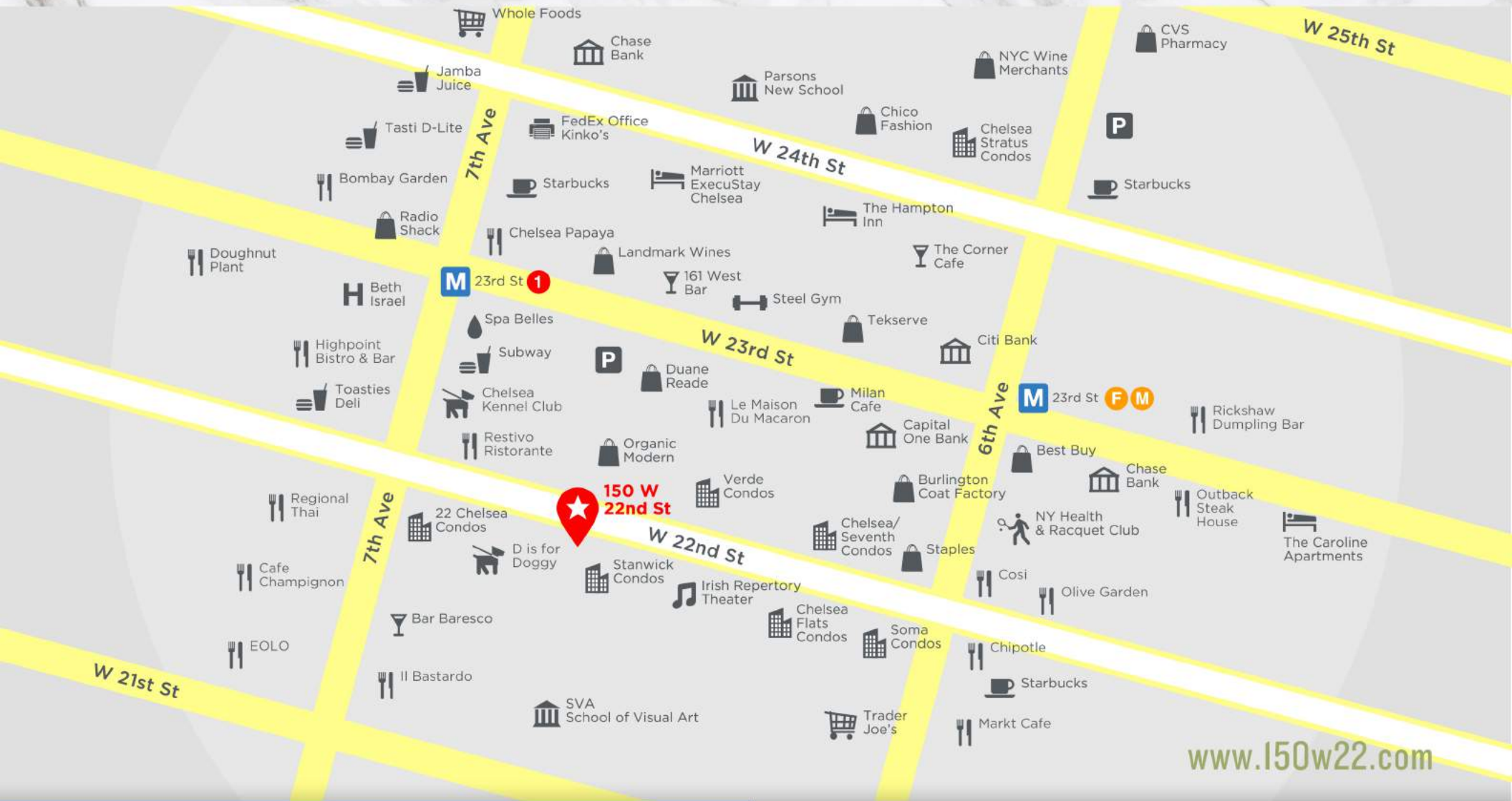
- Spectrum Fiber
- Signalpoint Communications
- M5 Networks
- Rainbow Broadband
- Towerstream
- Light Tower (possibly)





**CHELSEA  
CASTLE**

# 150 W 22<sup>ND</sup> ST.



[www.150w22.com](http://www.150w22.com)

**M. Rapaport**  
CO., INC. EST. 1904

**JAY D. A. FULLER**  
President | Licensed Real Estate Broker  
18 East 48<sup>th</sup> Street / 6<sup>th</sup> Fl / New York, NY 10017  
P: 212.355.7915  
jd@mrpaport.com [mrpaport.com](http://mrpaport.com)

 **REDWOOD**  
PROPERTY GROUP

Licensed Real Estate Broker

**ELI SOMECK**

225 West 35<sup>th</sup> Street | 12<sup>th</sup> Fl | New York, NY 10001  
P: 646.214.0334 C: 917.335.4948  
E: [eli.someck@redwoodnyc.com](mailto:eli.someck@redwoodnyc.com) [redwoodnyc.com](http://redwoodnyc.com)