

**483 10<sup>TH</sup> AVENUE**  
SOUTHWEST CORNER OF 37<sup>TH</sup> ST



# OPEN OFFICE SPACE SUITE 310 | 2,800 SF

**AVAILABLE IMMEDIATELY**

## BUILDING NOTES:

- Very convenient to Hudson Yards & New 7 Train Stop & Javitz Center
- Massive, Automated Freight Elevator & Loading Dock
- Owner-managed & Occupied      • 24/7 Attended Lobby
- 3D Photos & Floorplans Available • Verizon FIOS & Towerstream Available
- Capital improvement program complete including renovated lobby, new elevators, and class E fire system

## SPACE NOTES:

- New operable windows facing 10th Ave with great natural light
- Exposed Brick Walls      • Exposed Ceilings (App. 9')
- Brand New Hardwood Floors      • Original Wood Beams & Columns
- Wet Pantry      • Can Build: Conference Room

CONTACT EXCLUSIVE BROKERS:

**Paul Sosa** | P: 917.340.1225  
**Eli Someck** | P: 646.214.0334

E: paul.sosa@redwoodnyc.com  
E: eli.someck@redwoodnyc.com

225 West 35th Street, 12th Fl. New York, NY 10001  
[www.redwoodnyc.com](http://www.redwoodnyc.com)



**483 10<sup>TH</sup> AVENUE**  
**SOUTHWEST CORNER OF 37<sup>TH</sup> ST**



**REDWOOD**  
PROPERTY GROUP  
EXCLUSIVE BROKER



**Paul Sosa** | P: 917.340.1225  
**Eli Someck** | P: 646.214.0334

E: paul.sosa@redwoodnyc.com  
E: eli.someck@redwoodnyc.com

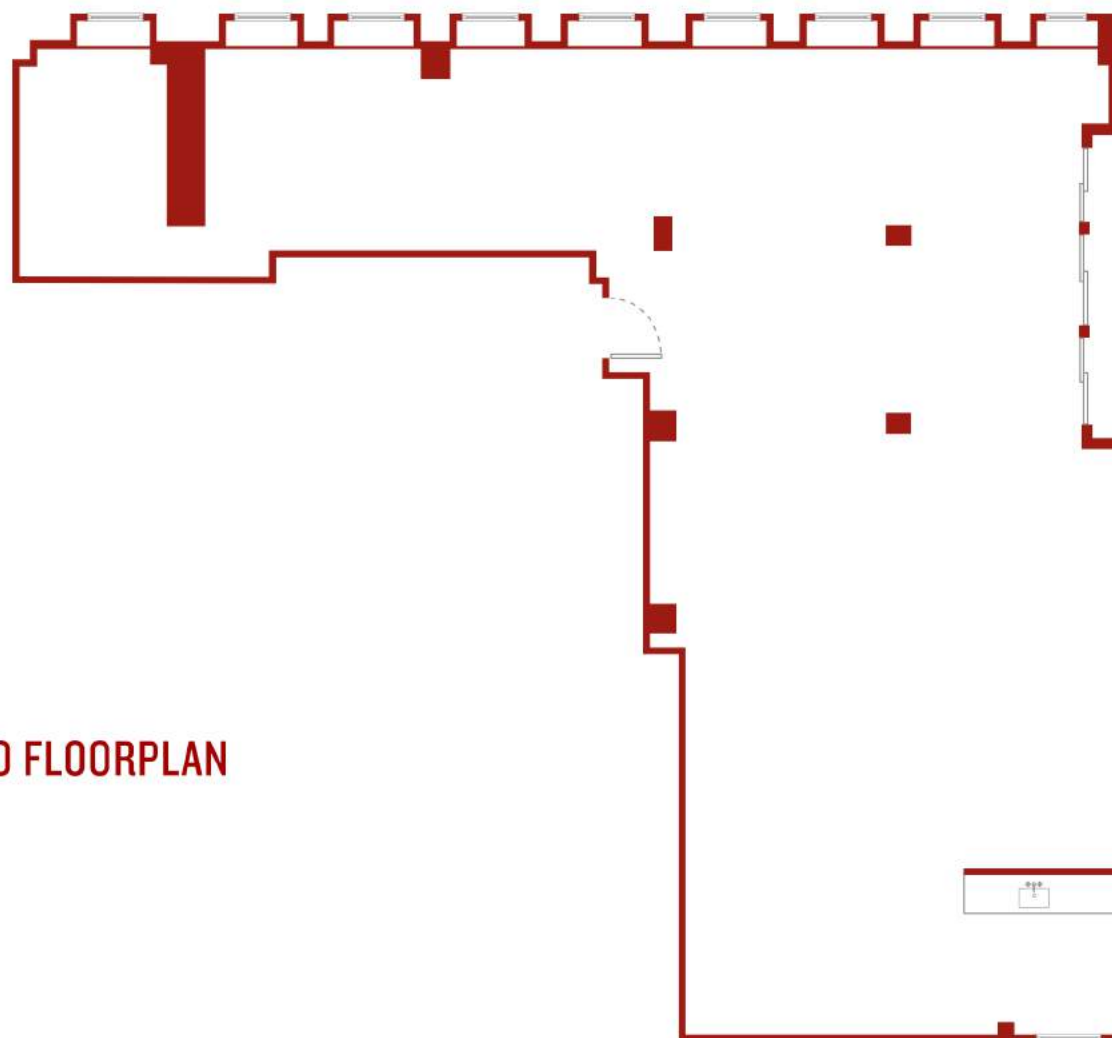
225 West 35th Street, 12th Fl. New York, NY 10001  
[www.redwoodnyc.com](http://www.redwoodnyc.com)

# 483 10<sup>TH</sup> AVENUE

SOUTHWEST CORNER OF 37<sup>TH</sup> ST



**REDWOOD**  
PROPERTY GROUP  
EXCLUSIVE BROKER



SUITE 310 FLOORPLAN

**Paul Sosa** | P: 917.340.1225  
**Eli Someck** | P: 646.214.0334

E: paul.sosa@redwoodnyc.com  
E: eli.someck@redwoodnyc.com

225 West 35th Street, 12th Fl. New York, NY 10001  
[www.redwoodnyc.com](http://www.redwoodnyc.com)