

# 25 PARK PLACE

BETWEEN CHURCH & BROADWAY



## Entire Top Floor Full Floor Opportunity

**AVAILABLE IMMEDIATELY**

**6500 RSF**      **5<sup>TH</sup> FLOOR**

**WITH MASSIVE SKYLIGHTS**

A charming loft building built in 1935 with abundant public transportation access.

### NEARBY TRAINS



**Jonathan Travis | Exclusive Broker**

225 West 35th Street, 12th Fl. New York, NY 10001

P: 212.760.2690 x 159

C: 516.343.7550

E: [jt@redwoodnyc.com](mailto:jt@redwoodnyc.com)

F: 212.810.4162

[redwoodnyc.com](http://redwoodnyc.com)

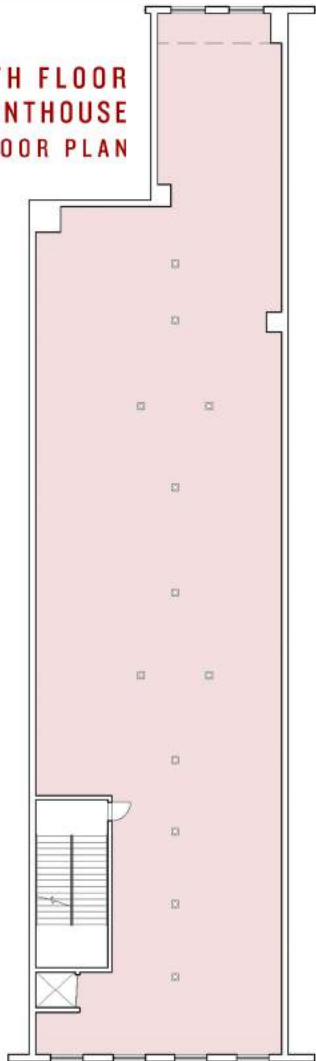
# 25 PARK PLACE

BETWEEN CHURCH & BROADWAY

# Entire Top Floor Full Floor Opportunity

**AVAILABLE IMMEDIATELY**

5TH FLOOR  
PENTHOUSE  
FLOOR PLAN



## 6500 RSF 5<sup>TH</sup> FLOOR

Term: **2-3 Years**      Asking Rent: **Please Inquire**

### SPACE NOTES:

- Full floor opportunity
- Low loss factor
- Original details including hardwood floors & tin ceilings
- 3 massive skylights
- 11' ceiling height, up 20' in areas of skylights
- 3 private restrooms + wet pantry
- Central HVAC in place
- Motivated landlord and aggressive pricing
- Leases signed may qualify for Commercial Revitalization Tax Incentive Program
- Within a couple blocks of Subway, Buses and Path train.



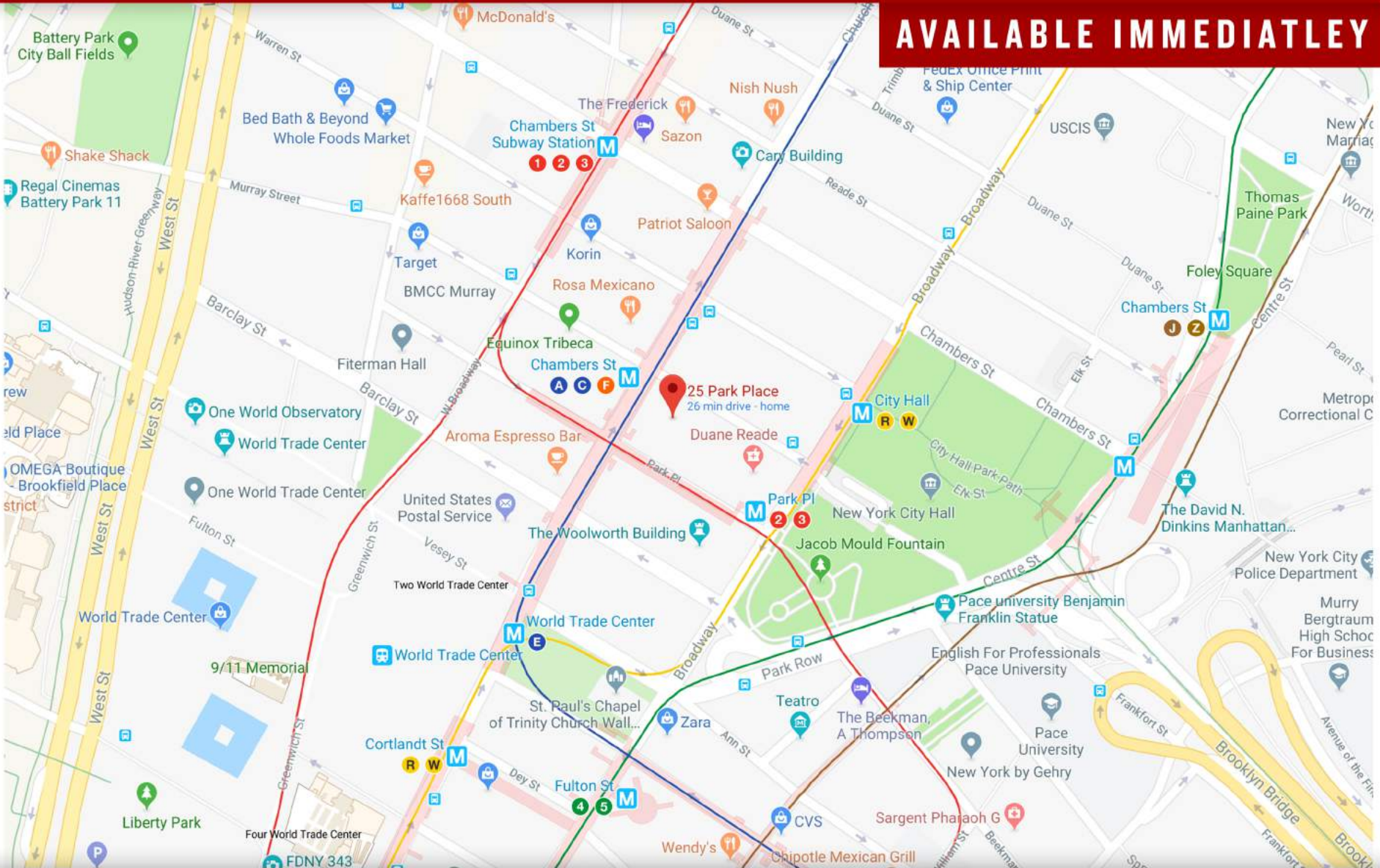
# 25 PARK PLACE

BETWEEN CHURCH & BROADWAY

# Entire Top Floor

## Full Floor Opportunity

**AVAILABLE IMMEDIATELY**



**REDWOOD**  
PROPERTY GROUP

Grow with us.

**Jonathan Travis | Exclusive Broker**  
225 West 35th Street, 12th Fl. New York, NY 10001

P: 212.760.2690 x 159  
E: jt@redwoodnyc.com

C: 516.343.7550  
F: 212.810.4162 [redwoodnyc.com](http://redwoodnyc.com)